



# **M.M.E. AIR WINCHES**

## **WAI SERIES**

**(500kg)**

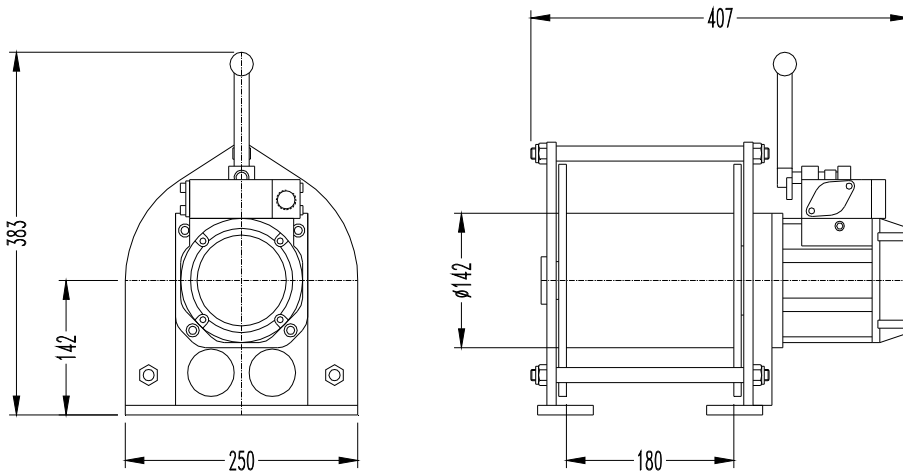
## **VERSATILE AIR WINCHES**



**RELIABLE    FAST    EFFICIENT    QUIET    EASY MOUNTING**

**LIFTING YOUR WORLD**

MME WAI series air winches are designed specifically for industrial and general engineering applications. The compact design of the winches allows them to be installed quickly where required in any orientation. The winches have a factor of safety in excess of 5 at the rated load. They comply with the requirements of ASME B30.7. The manufacturing facility producing the winches is ISO9001, SO14001 & OHSAS18001 certified.

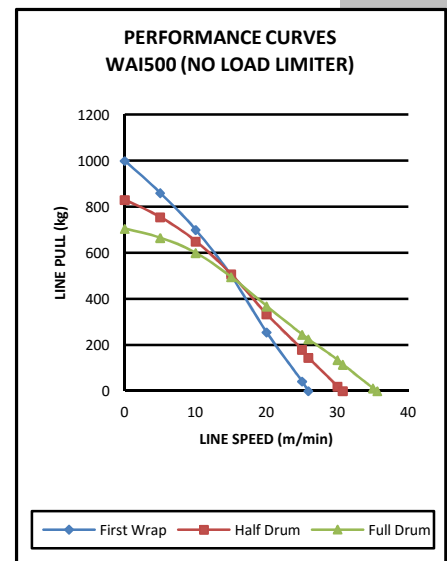


Management System  
ISO 9001:2008

www.tuv.com  
ID 9105085673

#### TECHNICAL SPECIFICATIONS @ 6 bar

Model	WAI500
Half Drum Line Pull (kg)	500
Rope Speed at Rated Load (m/min)	15.0
Full Drum No Load Speed (m/min)	35.6
Air Consumption (m <sup>3</sup> /min)	2.1
Air Connection	G½
Supply Hose (Inside Ø) (mm)	16
Sound Level (dB(A))	76
Recommended Rope Size (mm)	8
Rope Storage Length (m)	105
Max. Working Length (m)	70
Weight without Wire Rope (kg)	30



#### FEATURES AND CHARACTERISTICS

- Load Limiter** : Optional integral load limiter which automatically prevents overloading of the winch. Load limiter is 100% repeatable at all working pressures and does not wear or generate damaging heat.
- Emergency Stop** : Winches can be supplied with an emergency stop device as an option. This shuts off the main air supply to the winch when activated.
- Precise Control** : Lever control and pilot pendent control offer variable speed control. Accurate and precise positioning of loads is standard for all models.
- Fail Safe Disc Brake** : Non-asbestos self adjusting disc brake is applied automatically when the air supply to the winch is shut off. The brake is self adjusting for the life of the brake and is capable of holding in excess of 125% of the working load limit.
- Integral Silencer** : The exhaust air silencer is built into the winch frame and limits the noise level to 76dB(A).
- Vane Motor** : Assisted vane lifting ensures maximum starting torque when starting under load.
- Sealed Gearbox** : The sealed planetary gearbox ensures that the most stringent duty cycles can be met. The gears are heat treated and mounted on high strength, low friction bearings.
- Ease of Maintenance** : The modular design of the winch allows easy access to internal components such as the motor, gearbox, brake, load limiter and drum assembly. Common parts are used throughout the range.

M.M.E. MANUFACTURING CO. (PTY) LTD

P.O. BOX 355 CARLETONVILLE 2500, SOUTH AFRICA

TEL: +27 (18) 788-6674/5/6

Email: [info@mmelifting.com](mailto:info@mmelifting.com)

FAX: +27 (18) 786-1479

Website: [www.mmelifting.com](http://www.mmelifting.com)