



M.M.E. AIR WINCHES CAI SERIES (500 & 1000kg)

CAPSTAN AIR WINCHES



RELIABLE FAST EFFICIENT QUIET EASY MOUNTING

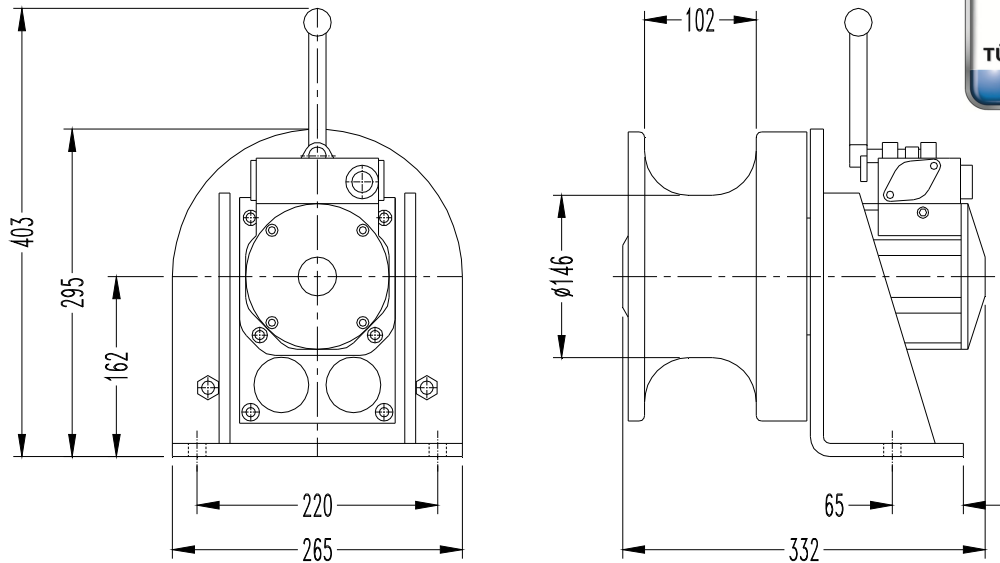
MOVING YOUR WORLD

MME CAI series capstan air winches are designed specifically for mining, industrial, marine and general engineering applications. The compact design of the winches allows them to be installed quickly where required in any orientation. The winches have a factor of safety in excess of 5 at the rated load. They comply with the requirements of ASME B30.7. The manufacturing facility producing the winches is ISO9001, ISO14001 & OHSAS18001 certified.



Management System
ISO 9001:2008

www.tuv.com
ID 9105085673



TECHNICAL SPECIFICATIONS @ 6 bar

| Model | CAI500 | CAI1000 |
|---------------------------------------|--------|---------|
| Rated Line Pull (kg) | 500 | 1000 |
| Rope Speed at Rated Load (m/min) | 14.8 | 7.4 |
| Air Consumption (m ³ /min) | 2.1 | 2.1 |
| Air Connection | G½ | G½ |
| Supply Hose (Inside Ø) (mm) | 16 | 16 |
| Sound Level (dB(A)) | 76 | 76 |
| Recommended Rope Size (mm) | 16 | 22 |
| Weight without Wire Rope (kg) | 30 | 30 |

FEATURES AND CHARACTERISTICS

- Emergency Stop** : Winches can be supplied with an emergency stop device as an option. This shuts off the main air supply to the winch when activated.
- Precise Control** : Ball valve, lever control or pilot pendent control offer variable speed control.
- Polypropylene Rope** : The use of large diameter polypropylene rope ensures a positive grip between the rope and capstan drum. Releasing the slack end immediately stops the pulling effort.
- Mounting Versatility** : The capstan winch can be mounted in any orientation to suite the required task.
- Integral Silencer** : The exhaust air silencer is built into the winch frame and limits the noise level to 76dB(A).
- Vane Motor** : Assisted vane lifting ensures maximum starting torque when starting under load.
- Sealed Gearbox** : The sealed planetary gearbox ensures that the most stringent duty cycles can be met. The gears are heat treated and mounted on high strength, low friction bearings.
- Ease of Maintenance** : The modular design of the winch allows easy access to internal components such as the motor, gearbox, and drum assembly. Common parts are used throughout the range.

M.M.E. MANUFACTURING CO. (PTY) LTD

P.O. BOX 355 CARLETONVILLE 2500, SOUTH AFRICA

TEL: +27 (18) 788-6674/5/6

Email: info@mmelifting.com

FAX: +27 (18) 786-1479

Website: www.mmelifting.com