



M.M.E. AIR HOISTS MTH52 SERIES MONORAIL TROLLEY HOISTS (10, 16, & 20 TONNE)



LOW HEADROOM COMPACT VERSATILE EFFICIENT QUIET

LIFTING YOUR WORLD

MME MTH52 series monorail hoists are designed specifically for mining, industrial, offshore and general engineering applications where headroom is extremely limited and a rigid combination unit is preferable to a hook-on type trolley. The hoists operate at air pressures of between 4 and 6 bar and have a factor of safety in excess of 5 at the rated load. They comply with the requirements of SANS 1638, SANS 1824, ASME B30.16 and EN14492-2. The manufacturing facility producing the hoists is **ISO9001, ISO14001 & OHSAS18001** certified.

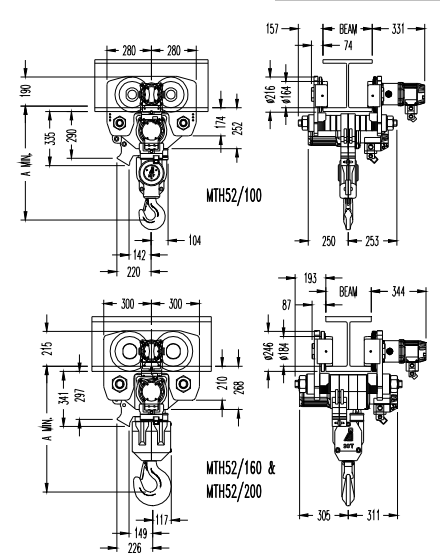
TECHNICAL SPECIFICATIONS

MODEL	MTH52/100	MTH52/160	MTH52/200
Lifting Capacity (tonne)	10	16	20
Falls of Chain	2	3	4
Chain Size (mm)	16 x 45	16 x 45	16 x 45
Total Weight (kg) *	375	570	595
Full Load Lifting Speed (m/min) @ 6 bar	1.5	0.9	0.7
Full Load Lifting Speed (m/min) @ 4 bar	0.9	0.6	0.4
No Load Lifting Speed (m/min) @ 6 bar	2.0	1.1	0.9
Full Load Lowering Speed (m/min) @ 6 bar	2.2	1.3	1.0
No Load Lowering Speed (m/min) @ 6 bar	1.7	1.0	0.8
Traverse Speed (m/min) @ 6 bar	12.5	12.5	12.5
Hoisting Air Consumption (m ³ /min) @ 6 bar	4.0	4.0	4.0
Traverse Air Consumption (m ³ /min) @ 6 bar	2.1	2.1	2.1
Air Connection	G1	G1	G1
Supply Hose (Inside Ø) (mm)	25	25	25
Sound Level (dB(A)) Full Load Lifting @ 6 bar	82	82	82
Full Load Lowering @ 6 bar	83	83	83
Beam Width Range (mm)	150-300	150-300	150-300
Minimum Headroom (mm)	A	685	740

* Weight of MTH52/100, MTH52/160 and MTH52/200 models include 3m lift, 2m E/Stop pendant control. For longer lifts add 11.4kg for the MTH52/100, 17.1kg for the MTH52/160 and 22.8kg for the MTH52/200 per metre of lift.

FEATURES AND CHARACTERISTICS

- Safety** : Standard throughout the range are anti fall, anti-derailment and anti-tilt features.
- Load Limiter** : Integral load limiter which automatically prevents the operator lifting a load in excess of 130% of the working load limit. Load limiter is 100% repeatable at all working pressures and does not wear or generate damaging heat.
- Emergency Stop** : All monorail hoists are supplied with main line emergency stop as standard. This shuts off the main air supply to the hoist and traverse motors when activated.
- Precise Control** : Accurate and precise positioning of loads is standard for all models.
- Fail Safe Disc Brake** : Non-asbestos self adjusting disc brake is applied automatically when the air supply to the hoist is shut off. The brake is self adjusting for the life of the brake and is capable of holding in excess of 125% of the working load limit.
- Automatic Stopping** : Motorized traverse drive unit is fitted with a fail-safe brake which stops and holds the monorail hoist stationary when the air supply is shut off.
- Integral Silencer** : The exhaust air silencer limits the noise level to 83dB(A).
- Load Chain** : Grade 8 case hardened, zinc plated load chain ensures stringent high speed duty cycles can be met. The load chain is in accordance with the requirements of EN818-7 and SANS/ISO 3077 Appendix B.
- Vane Motor** : Assisted vane lifting ensures maximum starting torque when starting under load.
- Sealed Gearbox** : The sealed planetary gearbox ensures that the most stringent duty cycles can be met. The gears are heat treated and mounted on high strength, low friction bearings.
- Ease of Maintenance** : The modular design of the hoist allows easy access to internal components such as the motor, gearbox, and load limiter. Common parts are used throughout the range.



M.M.E. MANUFACTURING CO. (PTY) LTD

P.O. BOX 355 CARLETONVILLE 2500, SOUTH AFRICA

TEL: +27 (18) 788-6674/5/6

Email: info@mmelifting.com

FAX: +27 (18) 786-1479

Website: www.mmelifting.com